



KRAMER

Wheel loader



**The compact genius among
wheeled loaders.**

Great size – great performance.

Developed out of need.
Created for application.



"The compact wheel loaders by Kramer keep all of the promises that we make as a community of high balanced handling. Despite compact dimensions, they impress through their performance efficiency and their flexibility as a system module. So we are able to work even more efficiently".

Florian Grubauer,
Mayor in North Rhine Westphalia

Unrivalled in concept.
Forward-looking in technology and design.

5035
5055
5065

Reduced operating costs through optimum power to weight ratio and compact dimensions.

More flexibility through a 3rd control circuit for hydraulically activated attachments and optional **power flow** performance hydraulics.

More efficiency in application thanks to an hydraulically activated quick-hitch system and parallel-controlled loading system.

Fatigue-free working thanks to the spacious and ergonomic comfort cab.

High level of reliability through easily accessible maintenance points and time-tested and proven components.

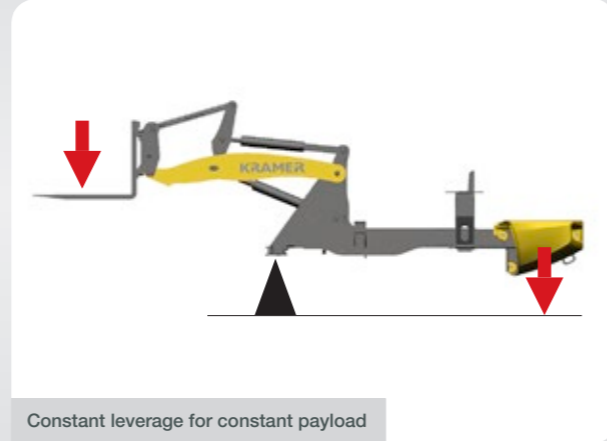
Independent in application thanks to optional high speed and a variety of tyre options.

Safety and time savings thanks to an undivided chassis and all-wheel steering for more stability and manoeuvrability.



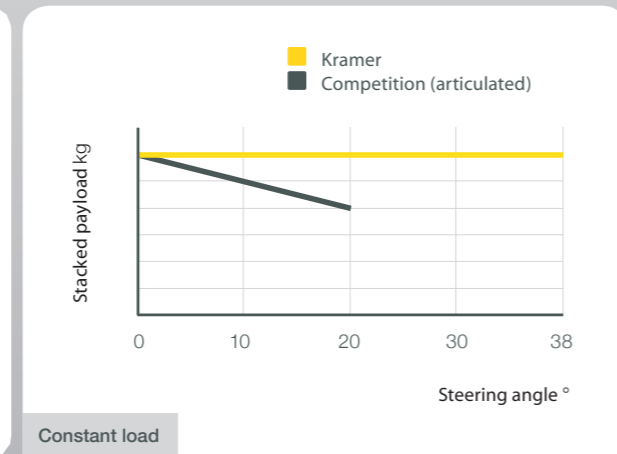
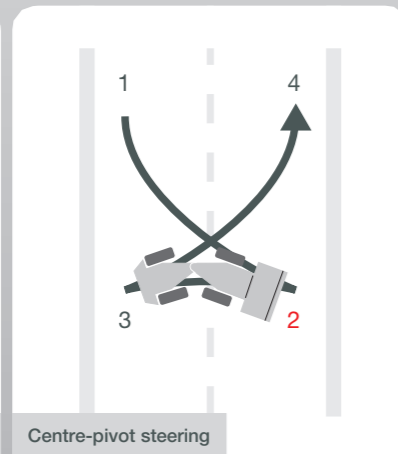
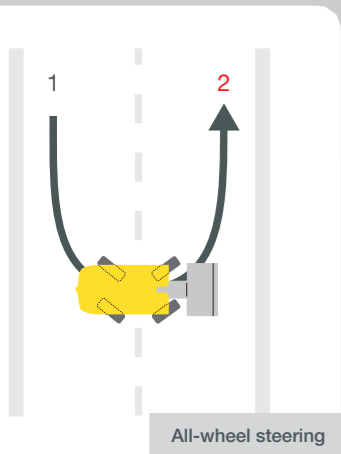
5035
5055
5065

The core of the loader.
The principle of success.



Kramer wheel loaders feature outstanding stability with their tried and tested undivided chassis.

The all-wheel drive ensures a minimal shift in the centre of gravity. Accordingly, a high level of safety against overturning is a given even on narrow curve radii, uneven terrain and with maximum payloads. And even on the road, where the 5055 and 5065 models convince with their front axle steering, the wheel loaders are safely on the go.



Undivided chassis and all-wheel steering:

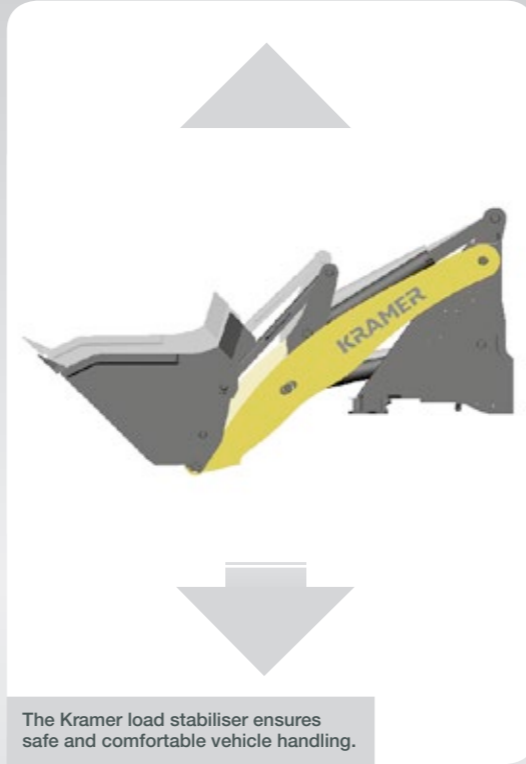
- Outstanding stability since the centre of gravity is not shifted by steering movements
- Outstanding manoeuvrability thanks to the all-wheel steering
- Consistently high payload, even when turning
- Gentle treatment of the ground with freely moving wheels and low operating weight
- Rapid cycle times thanks to 2 x 38° steering angle
- Familiar handling and safe road travel with optional front axle steering

- 1 Safe material handling with max. manoeuvrability
- 2 Manoeuvrability and a high level of stability thanks to the Kramer concept
- 3 Safe driving behaviour thanks to the front axle steering, even when driving at high speeds
- 4 Small required space and short work cycles thanks to the all-wheel steering



5035
5055
5065

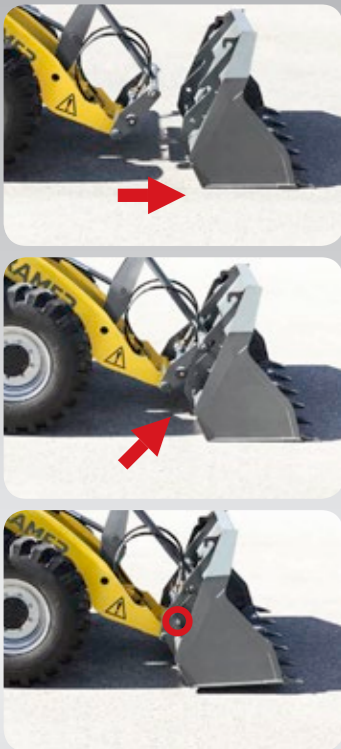
Created for routine.
Equipped for special tasks.



The Kramer load stabiliser ensures safe and comfortable vehicle handling.



Simply drive up to the attachment, hitch it up hydraulically from the cab and secure or detach it by pressing the lever while maintaining a clear line of sight.



The parallel motion of the loading system always keeps the load perfectly balanced, no matter whether it is in the bucket or on a pallet



Hydraulically activated quick-hitch system and parallel-controlled loading system:

- Change attachments within seconds
- High load-carrying capacity due to four large bolts arranged in dirt-protected area
- Secure material handling due to optimised bucket geometry
- Simple and safe handling thanks to optimal visibility of the attachment and working area



- 1 Easy truck loading due to application-oriented loading system geometry
- 2 The load arm is designed so that its full length can be used and the hydraulic cylinder is optimally protected



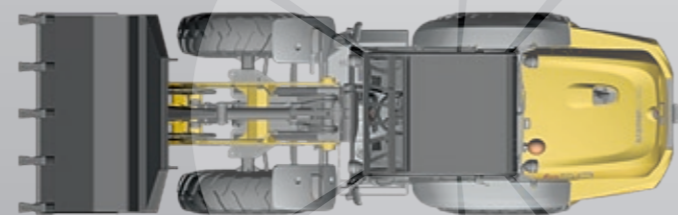
The lifting force and load are always under control with the parallel operated loading system. Due to high filling and dumping angles, no material is lost when filling levels in the bucket are high. As such, dumping is carried out easily and neatly.

The models of the Kramer compact class can be adapted to a variety of tasks in no time with a variety of attachments. This makes the wheel loader into a complete system.

At work with comfort.
Controlled with ergonomics.



All-round visibility. The panoramic cab with 360° all-round visibility and a permanent view of the respective attachment for maximum safety in the working area around the machine.



Roomy cab with perfect all-round visibility:

- Excellent visibility of the current attachment and work environment
- Generous interior width and height
- Wide entrance and intuitively placed grab handles
- High level of operating comfort through multifunction joystick with integrated arm support
- Safety thanks to the intuitive two-pedal system
- Fully integrated, powerful heating and ventilation
- Ventilation window
- Air-conditioning system for comfortable work in all operating conditions



- 1 Ventilation window with different opening angles for fresh air circulation as needed
- 2 Wide door opening and step geometry for safe and convenient entry
- 3 5035 and 5055 as canopy for climatically-independent areas
- 4 Spacious interior with ergonomic operator's controls

With a variety of ergonomics and functionality, the cab is not lacking when it comes to comfort and safety.

Kramer compact wheel loaders prove themselves as space savers technically in the cabin and ensure fatigue-free work with their outfitting.

Ergonomically positioned operator's controls ensure safe handling of the machine - both for professionals as well as occasional operators.



5035
5055
5065

Proven in driving.
Safely on the go.



Versatile in application with official approval for road use

Efficient drive system and low operating costs:

- Application-oriented and efficient drive system with high shear forces
- Simple travel direction change via joystick
- Low sound levels and reduced fuel consumption due to requirement-oriented engine version
- Traction on every subsurface thanks to various tyre options and differential lock



Motor with pump unit

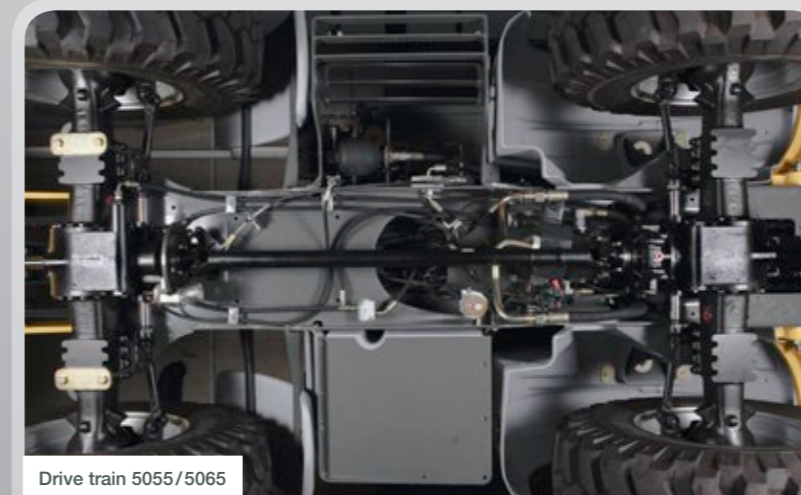
All models in the Kramer compact class have a demand-driven, efficient engine version as well as a continuously variable power transmission thanks to the latest hydrostatic technology.

The Kramer 5035

achieves incomparable dynamics through the drive system with four wheel hub motors. At the same time, the centre of gravity sits lower, which in turn increases stability.



Wheel hub motor 5035



Drive train 5055/5065

The Kramer 5055 / 5065

These models offer powerful axial piston, high pressure drive system with excellent shear forces and an infinitely variable power transmission (hydrostatic). They are able to reach a speed of up to 30 km/h when equipped with the optional high speed drive system.

Thanks to the official approval for road use, they can also play their strengths on the road with a load or trailer.

At home in versatility.
Suited for all tasks.

5035
5055
5065

- 1 Safe and easy connection of attachments
- 2 Mulching application with **power flow** performance hydraulics
- 3 Sweeper application with efficient 3rd control circuit (standard)



powerflow

power flow performance hydraulics



The work hydraulics offer refined working at minimal operating forces and low noise levels in the cab. In addition, the standard third control circuit with continuous function for efficient and convenient operation of hydraulically activated attachments. Matching dimensioned cylinders, efficient flow conditions and adapted discharge volumes enable quick work cycles.

With the optional **power flow**, a powerful drive system of hydraulically activated attachments is possible.

Versatility through 3rd control circuit and **power flow**:

- Standard hydraulic quick coupler system
- Increased flexibility through efficient 3rd control circuit
- Up to 24 kW in addition to the powerful drive system of hydraulically activated attachments with increased power requirement thanks to **power flow**
- Large sized hydraulic radiator for long-time application in power operation

Concept solution for system module

5035

5055

5065

HYDRAULIC PERFORMANCE VALUES

3rd control circuit* l/min/bar	20/180	52/190	52/190
Auxiliary control circuit l/min/bar	40/160	-	-
power flow performance hydraulics* l/min/bar	55/160	80/180	80/180

OUTFITTING VARIANTS

Front power socket	●	●	●
Unpressurised reflux	●	●	●
Manual throttle	●	●	●
Low-speed control	●	●	●

*optional operating point

Born for reliability.
In application for generations.

5035
5055
5065



SERVICE-ORIENTED
COMPONENT ARRANGEMENT

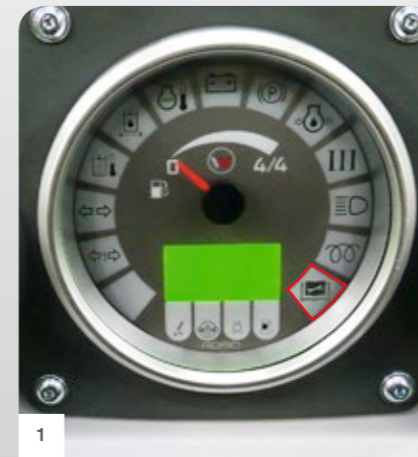
Air cleaner

Hydraulic oil level

Engine oil level

Maintenance and service:

- Easy maintenance access through wide-opening engine hood
- Good access for regular maintenance and control work
- Easy to fill diesel tank and standard fuel pre-filter
- Low-maintenance, easy to clean disc brake system
- Customer-oriented service and quick spare parts availability



1



2



3

1 2
3

With the longitudinally installed engine, Kramer demonstrates that compact dimensions can be combined with easy maintenance access.

Under the hood, therefore, are all of the components that must be checked regularly (such as the air cleaner, fill level of the hydraulic oil, and so on) and are ideally accessible. All necessary inspection, maintenance and service work is easy to carry out.

To summarise, Kramer's compact wheel loaders convince not only through the proverbial reliability of Kramer. They are also recommended as leading in the "cost of ownership".

Committed to efficiency.
Superior in economies.

5035
5055
5065



- 1 Max. manoeuvrability at full payload
- 2 Low clearance width and low operating weight
- 3 Low overall height for versatile application
- 4 Easy transport thanks to the compact dimensions



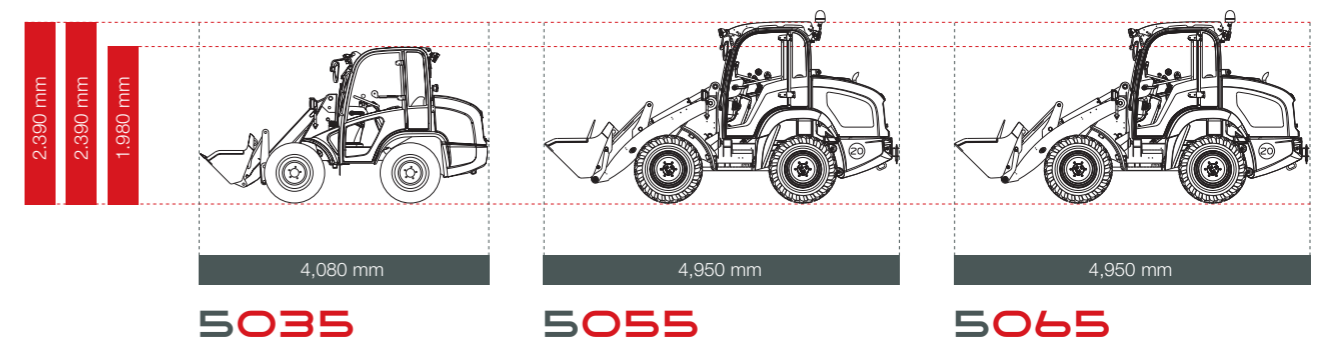
Light enough for cost-advantageous transport, small enough to go anywhere.

The Kramer wheel loaders of the compact class are agile in movement, dynamic in power delivery and slim in design. Their small tail swing radius enables them to work safely in confined areas.

With an optimised power to weight ratio, low shipping weight and continuous high payload, the efficiency calculation with this model series is much in favour of the end user. The economic calculation in any event.



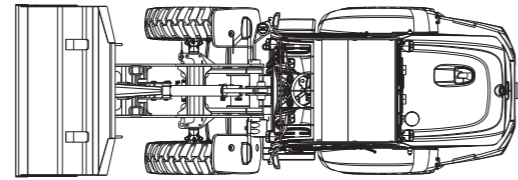
Body Mass Index



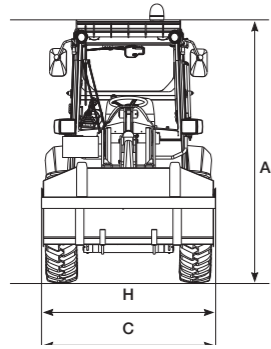
BMI DATA	5035	5055	5065
Payload S=1.25 kg	750	1,600	1,750
Charge weight kg	1,670/1,720*	3,450/3,600*	3,800
Shovel capacity m³	0.35-0.55	0.55-1.1	0.65-1.1

* CAB

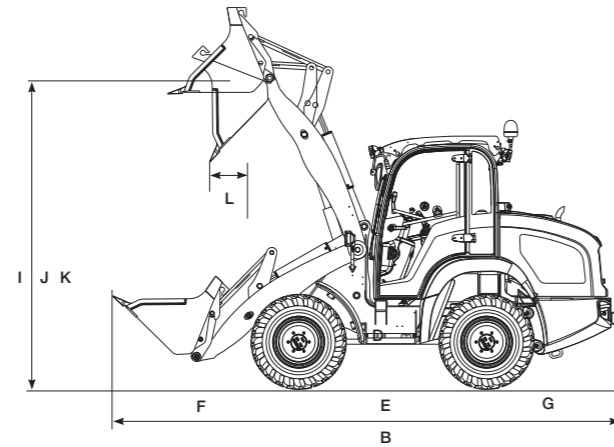
Technical data.



Wheel loader with standard bucket and standard tyres (top view)



Wheel loaders with standard bucket and standard tyres (front view)



Wheel loaders with standard bucket and standard tyres (side view)

	5035	5055	5065
DIMENSIONS			
A Height mm	1,990	2,380	2,390
B Length mm	4,080	4,950	4,950
C Width* mm	1,200	1,590	1,595
D Ground clearance mm	230	270	280
E Distance between rear wheels mm	1,525	1,850	1,850
F Middle of front axle to tip tooth mm	1,360	1,780	1,780
G Middle of rear axle to end of vehicle mm	1,195	1,320	1,320
H Bucket width mm	1,250	1,650	1,650
I Bucket pivotal point mm	2,800	3,040	3,050
J Overhead loading height mm	2,690	2,890	2,900
K Dumping height mm	2,260	2,320	2,330
L Dumping width mm	165	300	300
Stacking height mm	2,680	2,820	2,830
Turning radius of tyres mm	1,950	2,700	2,700
Turning radius of bucket mm	2,700	3,550	3,550
Turning radius of stacker mm	2,950	3,820	3,820

* with standard tires

5035
5055
5065

The essentials complemented. With a great feel for details.

Kramer compact wheel loaders actually already speak for themselves. Even more so if you work with attention to detail. Details that you may not even notice at first glance.

Details, however, that you know to appreciate even more upon second glance. Welcome to the world of Kramer details.



Staggered steps for safe entry and exit

Large-windscreen wiper on the front window with left detent for improved view

Practical placement of maintenance aids directly at the entry / exit

	5035	5055	5065
OPERATING DATA			
Shovel capacity m ³	0.35–0.55	0.55–1.1	0.65–1.1
Weight kg	1,670/1,720*	3,450/3,600*	3,800
Quick-change system	Hydraulic	Hydraulic	Hydraulic
ENGINE			
Make	Yanmar	Yanmar	Yanmar
Type/Model	3TNV88/3TNV84T	4TNV88	4TNV88
Performance kW/hp (optional)	23/31 (27/37)	35/48	35/48
Max.torque Nm at rpm 1/min	107 at 1,560 124 at 1,560 (optional)	136.3 at 1,680	136.3 at 1,680
Displacement cm ³	1,642 at 1,496 (optional)	2,190	2,190
Emission cm ³	Tested and certified according to 97/68 EC * 2004/26 EC		
POWER TRANSMISSION			
Drive unit	Continuously variable, hydrostatic axial piston transmission		
Travel speed km/h	0–20	0–20, 0–30	0–20, 0–30
Axles	Axle carrier made of cast steel with wheel hub motors	Planetary steering axle	Planetary steering axle
Overall oscillating angle °	±7	±8	±8
Differential lock	Compensation differential	100% (optional)	100%
Service brake	Hydrostatic	Hydr. disc brake	Hydr. disc brake
Parking brake	Spring-loaded multi-plate braking system, electro-hydraulically controlled	Mech. disc brake	Mech. disc brake
Standard tyres	28x9.00-15	10.5-18	12.0-18
STEERING AND WORK HYDRAULICS			
Functionality	Hydrostatic all-wheel steering	Hydrostatic all-wheel steering with emergency steering properties Front drum steering (option)	
Steering pump	Hydraulic pump via priority valve		
Steering cylinder	Double-acting with independent final position synchronisation		
Max. steering lock °	2 x 38°	2 x 38°	2 x 38°
Work pump	Gear pump	Gear pump	Gear pump
Flow rate l/min	20, 40 (optional), 60 (optional)	56, 90 (optional)	56, 90 (optional)
Pressure bar	240	235	235
KINEMATICS			
Design system	Z-kinematics with optimised parallel motion	Parallel kinematics	Parallel kinematics
Lifting force / shearing force kN	12.9/13.1	32.5/28	32.5/28
Lifting / lowering the lift cylinder sec	6.0/4.3	4.8/3.2	4.8/3.2
Fill shovel / empty shovel sec	2.4/1.5	2.1/2.0	2.1/2.0
Tip back / tip forward angle °	40/45	45/42	45/42
Tipping load (standard bucket) kg	1,250	1,980	2,340
Payload S = 1.25 (stacking) kg	750	1,600	1,750
Payload S = 1.67 (stacking) kg	560	1,200	1,310
Payload in transport frame S = 1.25 (stacking) kg	970	1,850	2,000
Digging depth mm	40	65	55
FILLING VOLUMES			
Fuel / hydraulic oil tank l	30/40	60/58	60/58
EMITTED NOISE			
	according to 2000/14/EU		
ELECTRIC SYSTEM			
Operating voltage V	12	12	12
Battery / alternator Ah/A	72/55	74/55	74/55
Starter motor kW	2.3	2.3	2.3

* CAB

STANDARD EQUIPMENT

Canopy / cabin	
Joystick console	Ergonomic layout of driver's control console: Mechanical pilot-operated joystick for raising / lowering and tilting in / out of the loading system, with a roller switch for selecting the travel direction. Mechanical pilot-operated 3rd control circuit for locking / unlocking the quick hitch facility and for operating hydraulically activated attachments, including notched position for continuous operation
Instrument panel	Instrument panel designed for overview with illuminated controls and ergonomically arranged tip switches
Electric power supply	12V plug receptacle
Lighting	Rear lights, brake lights, indicators, headlights x2 at front with main beam and side light
Engine hood	Opens widely for optimal maintenance access
Engine air supply	Via cyclone air filter with integrated safety cartridge
Key system	One-key system for doors, engine hood and fuel tank

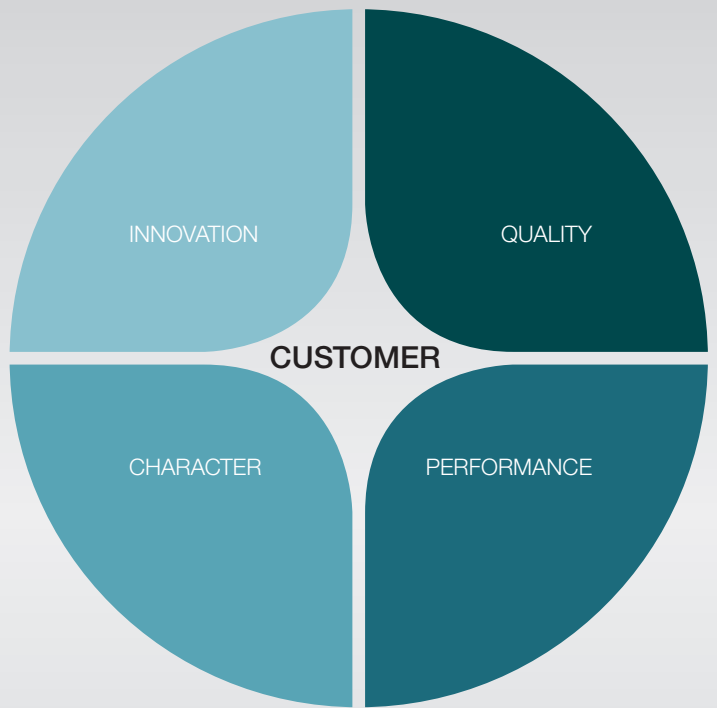
OPTIONS

Cab	Acoustically insulated, vibration-damped, 4-point suspension cab with spacious and downward sloped heat insulation glazing, approved according to roll-over protective structure and FOPS. Various storage options. Operator's seat. Mechanically suspended comfort seat with automatic safety belt, weight, back and horizontal adjustment Heating, ventilation. easy-to-operate, powerful 3-speed heating and ventilation. Sun visor. Screen wipers, Front and rear. Rear-view mirrors. Large outside mirrors, fold-down to notched positions on either side. Cab lighting. The side window can be locked in the ventilation and communication opening angle as well as be locked in a fully opened position. Door. Fully glazed, can be locked at 180°. Glass. Spacious heat insulation glazing.
Cab options	Rear heated window, comfort operator's seat, air-sprung driver's seat, rotating beacon, two front work lights, document box
Performance options	Floating position, creep speed controller and hand throttle, unpressurised reverse travel with leakage oil line, load stabiliser, trailer towing systems, electronic plug receptacle for front and rear attachments, engine with increased efficiency (350), hydraulically activated auxiliary control circuit, power flow performance hydraulics
Pre-heating	Fuel, engine and hydraulic fluid
Tyres	Lawn tyres, farm tractor profile, industrial tyres, tyre puncture protection
Safety	Hose burst valves for lifting and tipping cylinders, shielding of rotating engine parts, tool set, drive interlock, back-up alarm, protection against aggressive media, fire extinguisher, warning strips as per DIN 30710, rotating beacon. 5035: Underbody protection
Drive system	–
Custom-made paint finish	yes
Biodegradable oil	PANOLIN HLP Synth46
Warranty extension	yes

ATTACHMENTS

Attachments	Stacker, standard bucket, power grab bucket, light materials bucket, super light goods bucket, high-tilt bucket, bulky goods bucket, side tilt bucket, snowplow, sweeper, front ripper. Other auxiliary devices per request.
--------------------	------------------------------------------------------------------------------------------------------------------------------------------------------------------------------------------------------------------------------

5035	5055/5065
Spacious canopy with rear window for weather protection, approved according to roll-over protective structure and FOPS. Driver's seat: Mechanically-sprung operator's seat (ISO 7096) with automatic safety belt and weight, backrest and horizontal adjustment.	5055: Spacious canopy with rear window for weather protection, approved according to roll-over protective structure and FOPS. Driver's seat: Mechanically-sprung operator's seat (ISO 7096) with automatic safety belt and weight, backrest and horizontal adjustment.
	5065: Acoustically insulated, vibration-damped, 4-point suspension cab with spacious and downward sloped heat insulation glazing, approved according to roll-over protective structure and FOPS. Various storage options. Operator's seat. Mechanically suspended comfort seat with automatic safety belt, weight, back and horizontal adjustment Heating, ventilation. easy-to-operate, powerful 3-speed heating and ventilation. Sun visor. Screen wipers, Front and rear. Rear-view mirrors. Large outside mirrors, fold-down to notched positions on either side. Floor mat. The fitted floor mats are level with the frame. Cab lighting. The side window can be locked in the ventilation and communication opening angle as well as be locked in a fully opened position. Door. Fully glazed, can be locked at 180°. Glass. Spacious heat insulation glazing.
	Ergonomic layout of driver's control console: Mechanical pilot-operated joystick for raising / lowering and tilting in / out of the loading system, with a roller switch for selecting the travel direction. Mechanical pilot-operated 3rd control circuit for locking / unlocking the quick hitch facility and for operating hydraulically activated attachments, including notched position for continuous operation
	Instrument panel designed for overview with illuminated controls and ergonomically arranged tip switches
	12V plug receptacle
	Rear lights, brake lights, indicators, headlights x2 at front with main beam and side light
	Opens widely for optimal maintenance access
	Via cyclone air filter with integrated safety cartridge
	One-key system for doors, engine hood and fuel tank
	Acoustically insulated, vibration-damped, 4-point suspension cab with spacious and downward sloped heat insulation glazing, approved according to roll-over protective structure and FOPS. Various storage options. Operator's seat. Mechanically suspended comfort seat with automatic safety belt, weight, back and horizontal adjustment Heating, ventilation. easy-to-operate, powerful 3-speed heating and ventilation. Sun visor. Screen wipers, Front and rear. Rear-view mirrors. Large outside mirrors, fold-down to notched positions on either side. Cab lighting. The side window can be locked in the ventilation and communication opening angle as well as be locked in a fully opened position. Door. Fully glazed, can be locked at 180°. Glass. Spacious heat insulation glazing.
	5055: including floor mat. The fitted floor mats are level with the frame.
	Rear heated window, comfort operator's seat, air-sprung driver's seat, rotating beacon, two front work lights, document box
	FOPS II-protective grating, radio, 1 additional rear work light, air-sprung driver's seat, rotating beacon, 2 work lights in front, air-conditioning systems, document box
	Floating position, creep speed controller and hand throttle, unpressurised reverse travel with leakage oil line, load stabiliser, trailer towing systems, electronic plug receptacle for front and rear attachments, engine with increased efficiency (350), hydraulically activated auxiliary control circuit, power flow performance hydraulics
	Fuel, engine and hydraulic fluid
	Lawn tyres, farm tractor profile, industrial tyres, tyre puncture protection
	Wide-base tyres (direction-independent), farm tractor profile, municipal profile, tyres for industrial applications, tyre puncture protection, foam-filled tyres
	Hose burst valves for lifting and tipping cylinders, shielding of rotating engine parts, tool set, drive interlock, back-up alarm, protection against aggressive media, fire extinguisher, warning strips as per DIN 30710, rotating beacon. 5035: Underbody protection
	–
	High speed 0–30 km/h
	yes
	PANOLIN HLP Synth46
	PANOLIN HLP Synth46
	yes
	yes



The value wheel: The customer's success is at our centre.



We succeed thanks to the values of a medium-sized, family-owned company that is publicly traded. With the strength and expertise of a globally active organisation. With people that fulfil our motto every day with life and ideas.

We believe in quality, innovation, performance and character - and the lasting success of our customers. After all, that is what it is all about.

www.kramer-online.com